

Architecture in frozen moment of potentiality.

This is a presentation of excerpts of an unbuilt work created in 2007 in a collaborative effort with the local government of Taguig City, a paper architecture entitled 'Scion- Global School of Architecture'.

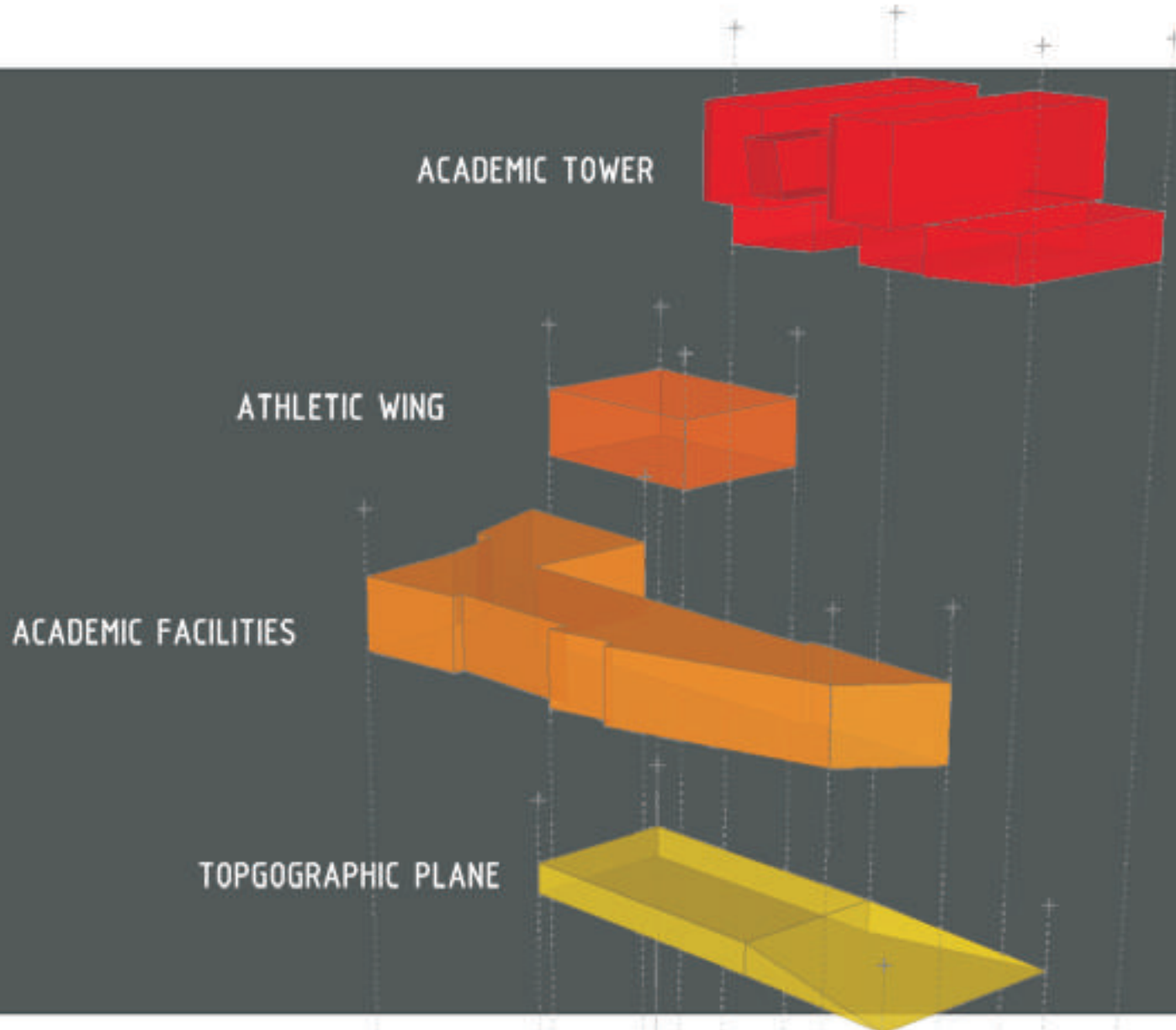
Global School of Architecture

The general concept of global education is to provide quality learning equally among all population regardless of social, geographical and financial status. Currently, the best architectural schools are found in Europe and in America. To spread a good level of education, Scion aims to provide the similar depth applied in the global architecture scene with direct influence from local pragmatism. This program is primarily intended for Filipino students who desire to have easy access to architectural discourse without having to travel abroad. Appropriate facilities for faculty would be provided to attract competent professionals for the academe. Technological facilities are provided to house environments in teaching and training students.

Educational Landscape

Scion aims to spread education further by reaching communities of similar goal. The school is divided into two layers, public and private, both intertwined and overlapped having strategic flow of circulation. The public layer, similar to a garden, would be a lively space that welcome users to explore, dine and rest. A social space is surrounded by a gallery, dining court and an open garden that acts as a volume of engagement. Once inside, the users are immersed in the architectural realm of Scion. Visitors can freely roam within the public layer that would lead through Scion's educational spaces and allowing the public as spectator of Scion's daily life. The school recognizes the importance of engaging with neighboring communities and their involvement in the creative aspect and planning process of Scion projects, in this way the community plays a part in creating a socio-culturally conscious architecture.

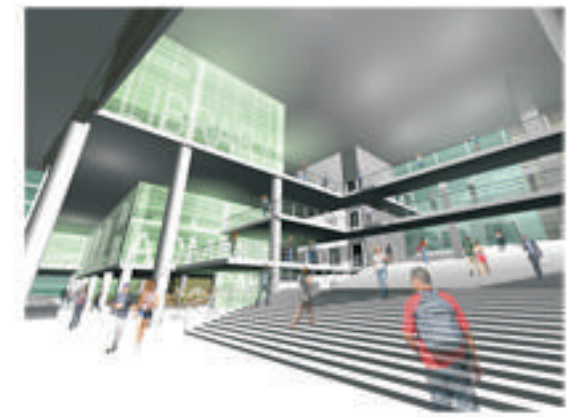
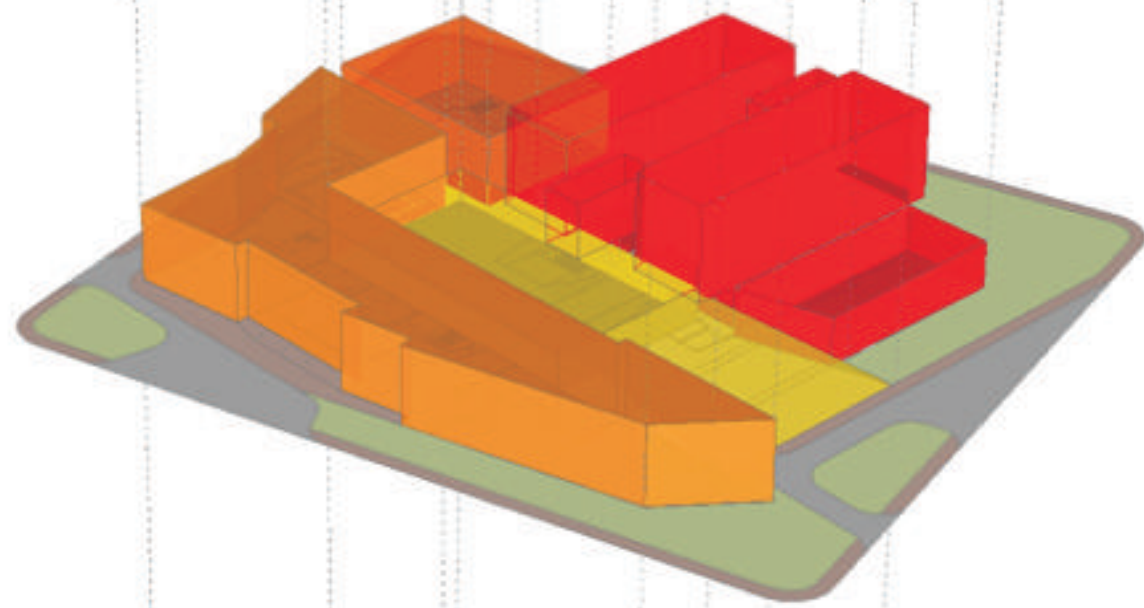




The architecture of the building engages to the urban fabric as a self-absorbing body that is a sponge to urban context. Its silhouette is staggered that is actively pushing and pulling. The goal is to turn its back from the norm of archaic and imposing edifice but liberate itself by being expressive to its porosity.

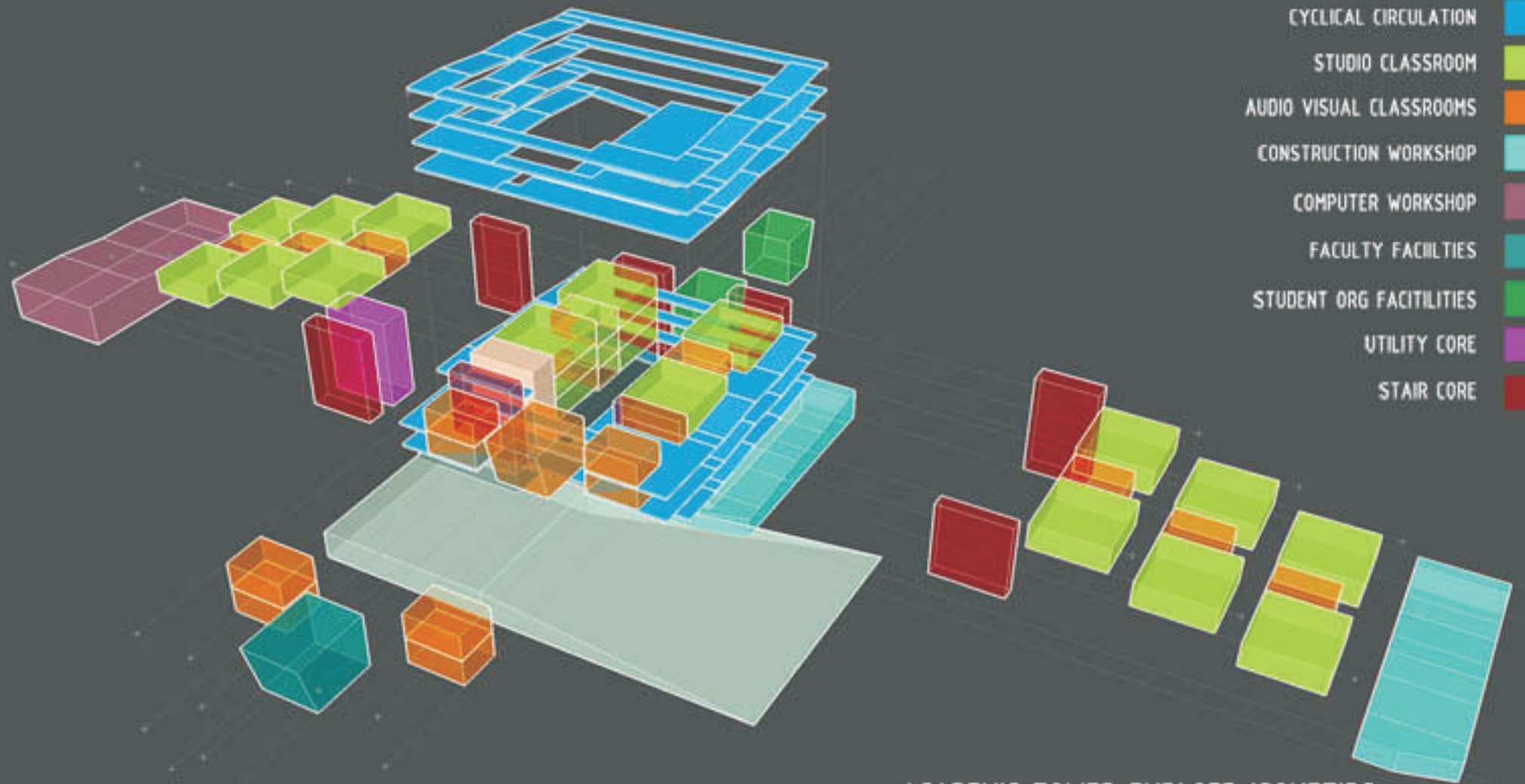
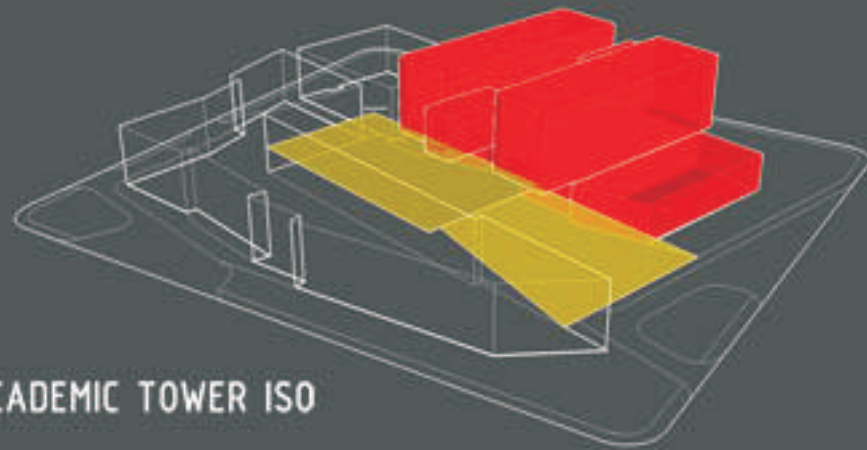
The internal organs of the structure uses the metaphor of 'strands that makes up a rope versus the rope as a whole'. The strength of its architecture relies on its definition of each strand of its program while recognizing the complexity of the macro impact. Each efficient component contributes in producing a harmonious whole.

The promenade is a briefing space, a welcoming void creates a long inviting blanket that welcome and embrace its users. This gesture breaks the paradigm of a drop-off and main door imagery.



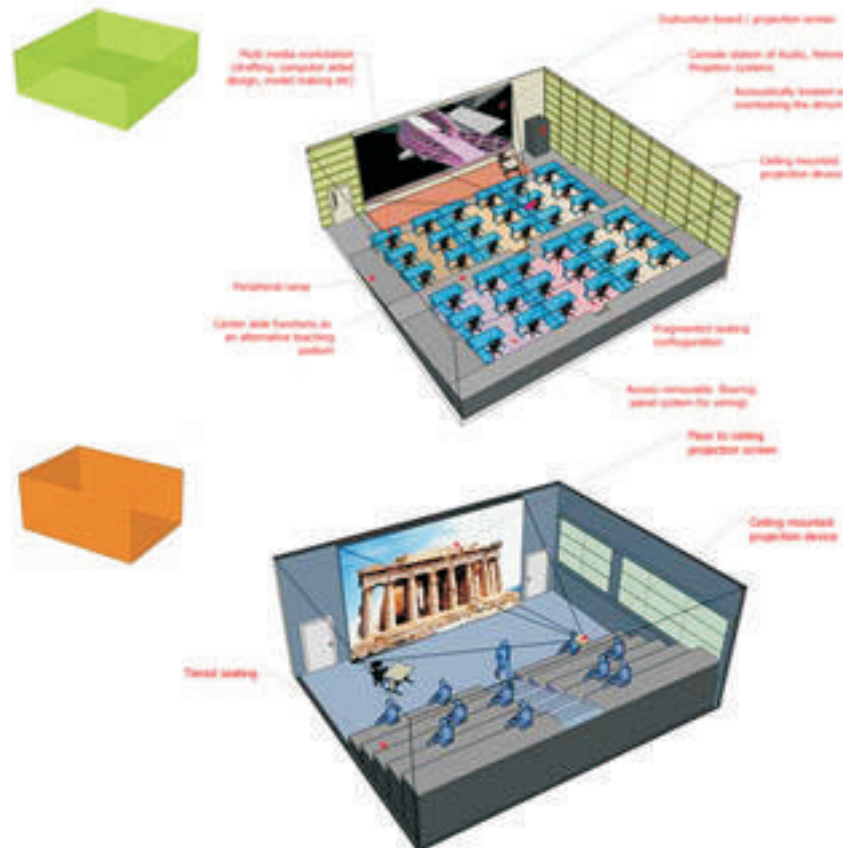
The interstitial spaces creates an elaborate language of articulation between the programs along the building edge. It creates a romantic platform for gathering that is flooded by light and enhances the spatial experience of social learning.

ACADEMIC TOWER ISO



- CYCLICAL CIRCULATION
- STUDIO CLASSROOM
- AUDIO VISUAL CLASSROOMS
- CONSTRUCTION WORKSHOP
- COMPUTER WORKSHOP
- FACULTY FACILITIES
- STUDENT ORG FACILITIES
- UTILITY CORE
- STAIR CORE

ACADEMIC TOWER EXPLODED ISOMETRIC

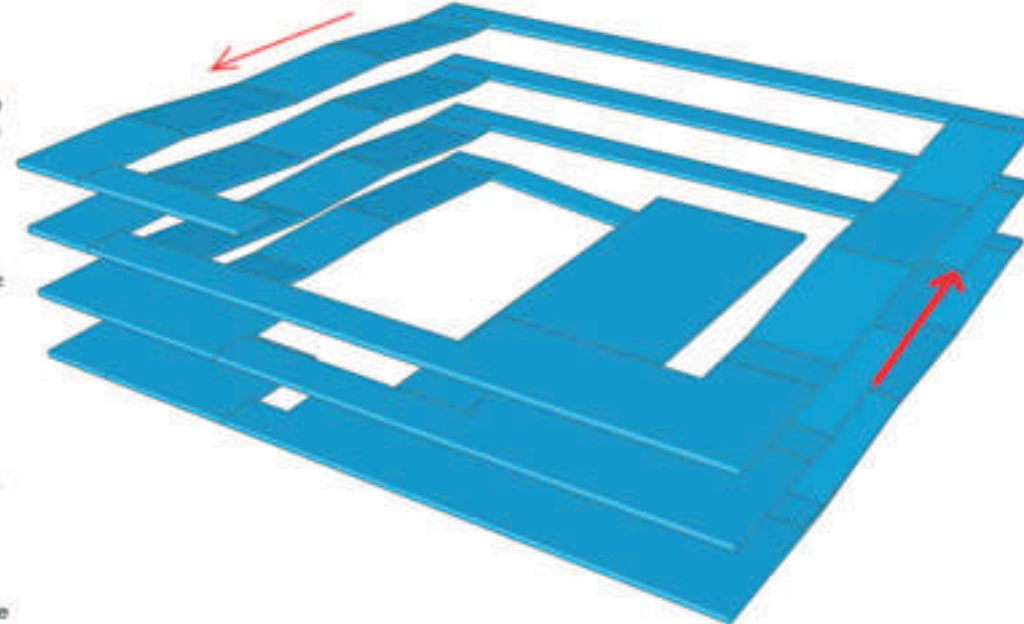


STUDIO CLASSROOM DETAIL

These are custom designed classrooms for design and design related subjects. Peripheral circulation is defined by ramps to allow professors to supervise students up to the farthest end of the classroom while seating configurations are fragmented into 6 areas to define smaller units of teaching. A center aisle is also designed to be an alternative teaching podium for professors in the center of the room.

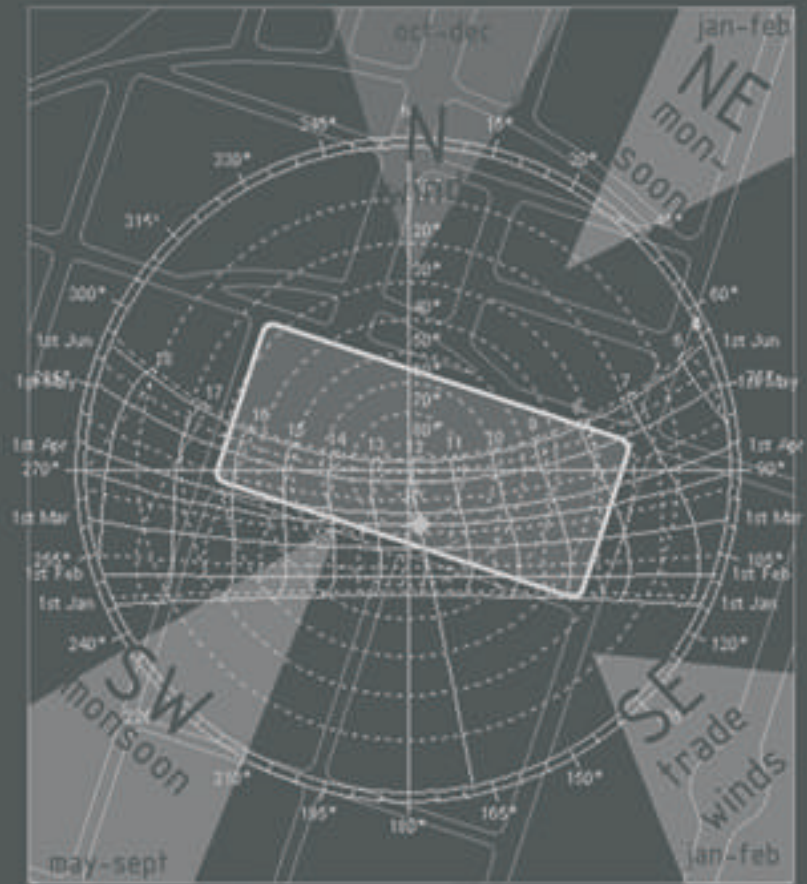
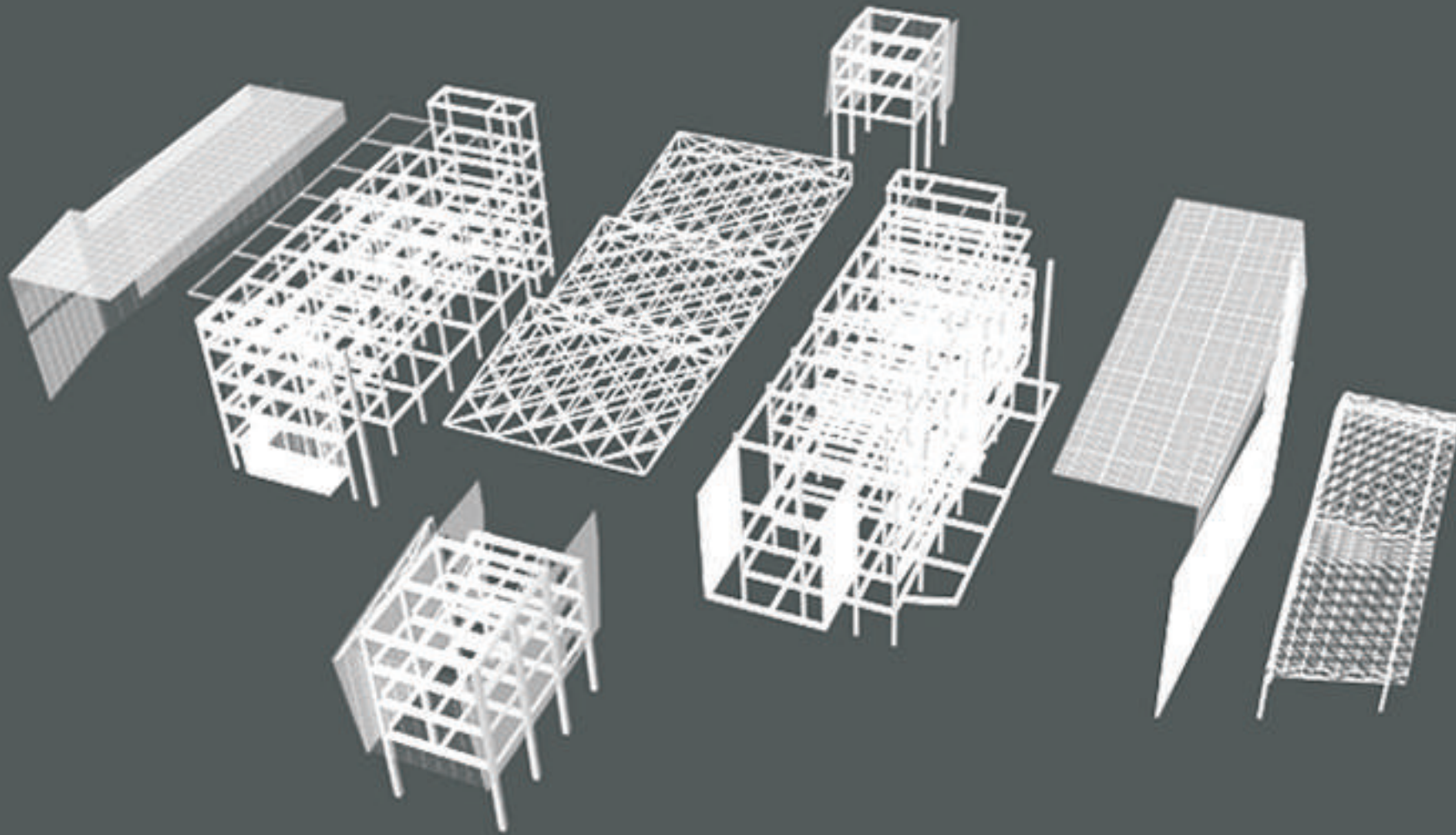
AUDIO VISUAL ROOM DETAIL

These are custom designed classrooms for subjects that are based primarily on verbal and visual communications, such as History and Theory subjects. Barriers such as tables have been eliminated in this setup to encourage participation and involvement. A center aisle is applied as an alternative teaching podium for the professor allowing instructors to actually sit and discuss as part of the student group. A projection screen that ranges from the floor to ceiling is designed to help students understand more clearly architectural concepts and theories by means of real scale proportions.



The circulatory ramp is the artery of the academic tower connecting classrooms and facilities by means of one continuous spiraling route within the structure. It also functions as a space to utilize for non classroom activities such as architectural exhibitions and alternative working space

EXPLODED SKIN-STRUCTURE DIAGRAM



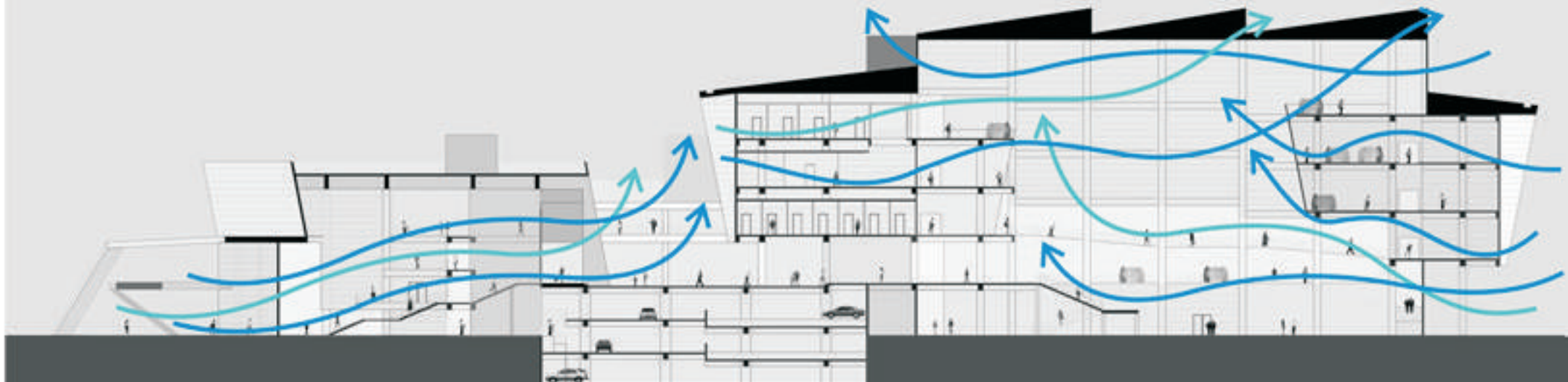
Stereographic Diagram

Location: 18.9°, 72.8°
 Sun Position: 168.3°, 70.5°
 HSA: 168.3°
 VSA: 109.2°

Time: 12:00
 Date: 21st Mar
 Dotted lines: July-December

ATMOSPHERIC DIAGRAM

Its approach to ecology is to accommodate intrinsic solutions by treating the structure as a dynamic body that molds its form naturally to the context of environment. This way, the physical form of architecture is independently sustainable and the strategy of integrating advanced technology acts as supplement, thus arriving to a total 'green' architecture.



WIND FLOW DIAGRAM



Unit 26a is a collaboration between 6 passionate designers with an enthusiasm for modern and sustainable design and a desire to prove that a developing country can compete in the international playing field of design. Inspired and dedicated, this collaboration consists of a balanced skill ratio with some having strengths in technical knowledge, others with conceptual thinking, some in form and proportion and others in programming. The dynamics between the group is truly a collaborative one with every approach beginning with a conversation. They place a huge importance on the dialogue with the client in order to translate the clients' needs into a functional and visually aesthetic design. Their strength lies in everyone's need to bounce ideas off of each other and everyone's openness to criticism to constantly push the idea further. Research is an essential part of the process where deep analysis of the given conditions forms space and mass evolutions. Their never ending quest for perfection and ever critical mind continues to drive the group's performance and capabilities.

Jonathan Jimenez, project architect

Jonathan received his degree in architecture at the Mapua Institute of Architecture in Manila. Skilled in technical knowledge and application, he accomplished numerous residences around the metropolis during his private practice. He also worked on mid-scale residential developments with BPP Architects in Melbourne such as Westbury Apartments (2008) and Tooronga Village (2008). His involvement with large-scale residential development under the office of Lor Calma & Partners includes One Serendra (2007) and The Residences at Greenbelt (2008). Other current work is The Waltz Project in Taguig City.

Leandro Llorente, project architect

Leandro was educated in architecture at University of Santo Tomas mainly under Henry De Jesus (UCLA) and Jorge Yulo (Rensselaer). In 2002, he worked under the office of the National Artist for Architecture, Lindy Locsin. During his tenure, the vision of the firm was spearheaded by Andy Locsin (Harvard). In 2007, he was involved under the interdisciplinary studio of a prestigious awardee of The Outstanding Young Men for Architecture, Eduardo Calma (Pratt, Columbia NY).

Leandro has an uncompromising passion in smart architecture, good perception, wise tectonics and pleasing pragmatism. In the course of his practice, he has established a strong reputation amongst colleagues as a forward-thinker that is able to provide essential critiques sophisticated insight of spatial form and an ability to provide clever design solutions.

Adrian Alfonso, project designer

Adrian graduated top of his class from University of Santo Tomas in 2007. An avid competition participant, he won the prestigious Benavides award for the student category in the Culture Center of the Philippines, a national competition organized by the Philippine Association of Landscape Architects. Considered to be one of the emerging young architects in Manila, he gained attention of local press after winning this competition and continued to add another feather to his cap by recently winning a competition to design a landmark structure across Ninoy Aquino International Airport Terminal 3 organized by Metro Manila Development Authority.

Deo Alam, project designer

Deo Alam graduated top of his class from Manuel L. Quezon University. His story is an unusual one. Coming from very humble beginnings, he has displayed an innate and unusual creativity that is consistently unique and innovative. His natural eye for form and proportion can be seen in the projects he has designed while working for Lor Calma and Partners, from the Mind Museum, the first science museum in the Philippines, to a 10,000 sqm residential project in Cebu to the 2008 Zarragoza expo, which won gold, and 2010 Shanghai Expo. With an avant garde mindset, his works exude an undeniable trademark fluidity that although the design may vary drastically his style is instantly recognizable.

Stephanie Sy, project coordinator – interior design

Stephanie was born in the Philippines, raised in Hong Kong and educated in the US. She started off her career in Branding and Marketing only to realize her passion was in interior design. She quit her career and went to Florence, Italy to pursue an education in interior design and then moved to the Philippines to begin her career with Lor Calma, a modernist firm that has gained an almost cult following. Handling projects ranging from residential homes to the very first science museum in the Philippines to hotels to the Philippine pavilion in the 2010 Shanghai expo, her short tenure in Lor Calma has provided her with a wide range of projects in terms of breadth and scale.

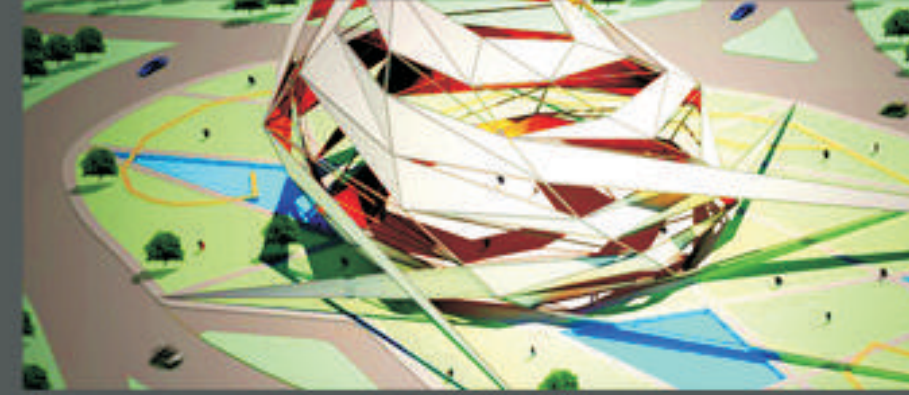
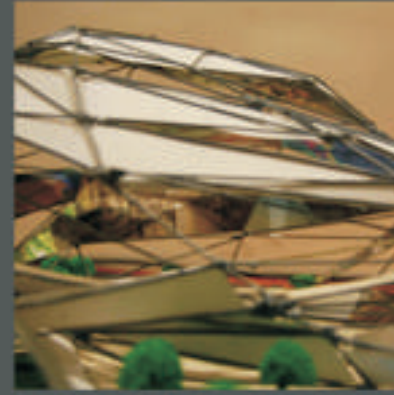
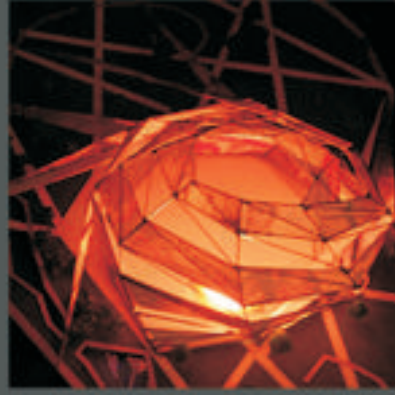
Pearl Robles, project coordinator – architecture

Pearl received her degree in architecture at the University of Santo Tomas with distinction in her dissertation. She joined the office of Joey Yupangco + Association in 2005 and handled numerous residential, retail and commercial projects.

Her immersion in a highly creative environment has honed her principles, nurtured her artistic impulse and has strengthened her sensibilities as an architect. She has a strong visual acuity to aesthetic intent which has consistently produced consistency in all her project's integrity.



'NEO CCP' CULTURAL CENTER OF THE PHILIPPINES NATIONAL COMPETITION



'LAYAG ISLAS' MMDA NAIA3 LANDMARK NATIONAL DESIGN COMPETITION

MERITS

2006 - CULTURAL CENTER OF THE PHILIPPINES NATIONAL DESIGN COMPETITION FOR EXEMPLARY DESIGN ACADEMIC CATEGORY FIRST PLACE

2008 - METRO MANILA DEVELOPMENT AUTHORITY NAIA 3 ROTUNDA LANDMARK COMPETITION - FIRST PLACE